



ATLANTIS
THE PALM, DUBAI

MICE Toolkit



Contents

To access specific information, select the relevant section from the contents page.

Intro	3
Rooms, suites & signature suites	4
Rooms details	5
Tailored experiences for every event	6
Indoor spaces	7
Outdoor spaces	8
Conference facilities overview	9
Capacity chart	10
Floor plan	11
Restaurants	12
Aquaventure World	17
Resort Map	18

An aerial photograph of the Atlantis, The Palm resort in Dubai, United Arab Emirates, taken during sunset. The sun is low on the horizon, casting a warm, golden glow over the entire scene. The resort's iconic architecture, featuring a large central archway, is silhouetted against the bright sky. The surrounding artificial islands and the city skyline of Dubai are visible in the distance. The water in the foreground is dark, with some reflections of the sky and the resort's lights.

Welcome to A World Away

Atlantis, The Palm is an iconic ocean-themed resort on Dubai's Palm Island, where extraordinary events come to life. From global conferences and incentive retreats to grand celebrations, every occasion is elevated by exceptional service, iconic surroundings, and the resort's distinctive energy.



Rooms, Suites & Signature Suites

The resort offers accommodation tailored for every group, from ocean-facing rooms to spacious suites and signature suites. Guests enjoy award-winning dining, pristine beaches, and world-class facilities, making Atlantis, The Palm an ideal location for corporate events, incentive trips, and group celebrations.





Guest Rooms & Suites

NO. OF ROOMS: 1,544

ROOM TYPE	NO. OF ROOMS	ROOM SIZE (SQM)
Ocean Deluxe Room	472	45 - 47
Palm Deluxe Room	460	
Imperial Club Room	276	
Family Room	120	92
Family Club Room	50	92
Terrace Suite	30	94
Skyline Suite	19	101
Regal Suite	8	164
Two Bedroom Terrace Suite	52	140
Two Bedroom Skyline Suite	25	147
Two Bedroom Regal Suite	26	210
Underwater Suite	2	165
Presidential Suite	2	220
Grand Atlantis Suite	2	429

All rooms offer either partial views of the Arabian Sea or The Palm. All rooms are equipped with safes, iron, iron board, tea and coffee making machines, bath robes, separate bath and shower and 24-hour room service.

Tailored Experiences for Every Event

WEDDING

Atlantis, The Palm offers iconic indoor and outdoor venues, expert event support, and premium catering to deliver exceptional wedding celebrations and receptions for couples and their guests.

GRADUATION CEREMONY

A distinguished setting for school and university graduations, with flexible ballrooms, professional sound and staging capabilities, and seamless event coordination for ceremonies and celebrations.

STAFF PARTY

From beachfront gatherings to gala dinners, Atlantis, The Palm provides versatile venues, elevated catering and entertainment options, and dedicated support for memorable staff and company-wide celebrations.

CORPORATE MEETING

Purpose-built meeting spaces featuring advanced technology, flexible layouts, and expert planning support. Ideal for high-impact board meetings, strategy sessions, and corporate programmes.





Indoor Spaces

- ▶ The Conference Centre features 13 meeting rooms, 3 ballrooms, and a boardroom, offering flexible solutions for any event.
- ▶ The Atlantis Ballroom accommodates up to 2,000 guests and can be subdivided to suit your needs. With its own private entrance, it offers easy access and convenience.
- ▶ The Spice and Silk Ballrooms can be divided into smaller spaces for tailored setups, while the Andes Boardroom provides an ideal setting for corporate meetings, complete with the latest technology and private facilities.





Outdoor Spaces

- ▶ Atlantis, The Palm offers exceptional outdoor venues with views of the Palm Island and Dubai's skyline.
- ▶ The Royal Terrace, with a private entrance in the West Tower, is ideal for pre-function gatherings, afternoon breaks, or stand-up receptions.
- ▶ Beach and poolside locations provide the perfect setting for evening events, while the waterpark's Neptune Tower offers a distinctive backdrop for creative occasions.

Conference Facilities Overview

13 MEETING ROOMS

- Total meeting area – 5,544sqm (60,278 sq ft)
- Ballrooms are divisible in up to 5 separate rooms
- Ceiling area spans 2,100 sqm
- 3-phase power
- Adjustable mood lighting
- High-speed Internet access

ATLANTIS BALLROOM

- 8-metre high ceilings
- Themed décor
- No pillars obstructing view
- Accommodates gala dinner for up to 1,500 guests
- Direct access to Royal Terrace
- LCD screens outside each door
- Full in-house rigging services
- Plentiful hanging points
- Can be divided into 5 sections

SPICE BALLROOM

- Bright and airy
- Pre-function area
- Andes Boardroom adjacent
- Private terrace
- LCD screens outside each door
- Can be divided into 3 sections

SILK BALLROOM

- Conveniently located between 2 ballrooms
- Can be used with Spice & Atlantis Ballroom for breakout rooms
- LCD screens outside each door
- Can be divided into 3 sections

ASATEER

- Seats 1,500 for dinner and 2,500 cocktail style
- 11-metre high ceiling
- Spacious lobby lounge
- Ample car parking via a private entrance

ANDES BOARDROOM

- Natural daylight
- Private bathroom
- Ideal for important meetings
- Adjacent to Spice Ballroom - ideal breakout room
- Direct access to Royal Terrace
- LCD screens outside each door

ROYAL TERRACE

- Spectacular view of Dubai's Skyline
- Views of Dubai Marina

PALM BEACH

- Large expanse of beachfront for tailor-made events
- Views of Dubai's Skyline

LOST WORLD AQUARIUM

- Unique cocktail receptions or product launches

AQUAVENTURE WATERPARK

- Ideal for a team building or gala dinner

OTHER VENUES

- 20 restaurants for private events

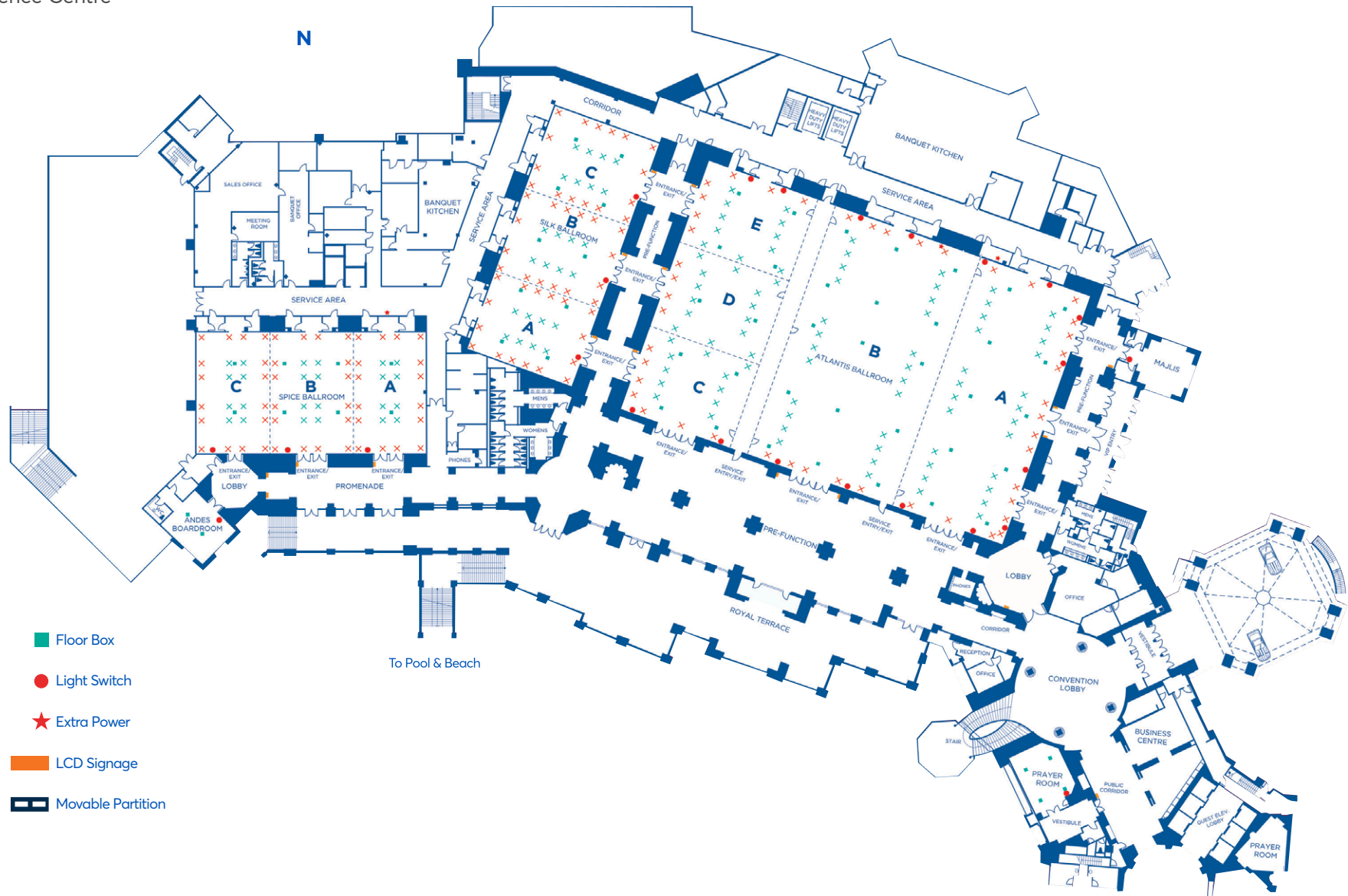
Capacity Chart

	Dimensions				Capacities							
	Area	Height	Length	Width	Reception	Set Dining	Buffet	Cabaret	Theatre	Classroom	Boardroom	U Shape
A Atlantis Ballroom	2100m ²	8.75m	36.9m	56.9m	2500	1500	1200	1050	2050	1050	360	400
Divisible by 3												
A	601m ²	8.75m	36.9m	16.3m	675	390	305	273	450	300	100	120
B	797m ²	8.75m	36.9m	21.6m	975	540	440	378	600	450	160	180
CDE	601m ²	8.75m	36.9m	16.3m	675	390	305	273	450	300	100	120
CDE divisible by 3												
C	200m ²	8.75m	12.3m	16.3m	240	130	100	91	150	80	30	40
D	200m ²	8.75m	12.3m	16.3m	240	130	100	91	150	80	30	40
E	200m ²	8.75m	12.3m	16.3m	240	130	100	91	150	80	30	40
B Silk Ballroom	540m ²	3.7m	15m	36m	600	250	210	175	300	195	75	90
Divisible by 3												
A	177m ²	3.7m	15m	11.8m	200	70	70	56	100	65	25	30
B	177m ²	3.7m	15m	11.8m	200	70	70	56	100	65	25	30
C	177m ²	3.7m	15m	11.8m	200	70	70	56	100	65	25	30
C Spice Ballroom	538m ²	3.7m	16.8m	32m	600	250	210	175	300	195	75	90
Divisible by 3												
A	176m ²	3.7m	16.8m	10.5m	200	80	70	56	100	65	25	30
B	176m ²	3.7m	16.8m	10.5m	200	80	70	56	100	65	25	30
C	176m ²	3.7m	16.8m	10.5m	200	80	70	56	100	65	25	30
D Prayer Room	56m ²	3.6m	8m	7m	-	-	-	-	-	-	-	-
E Andes Ballroom	52m ²	4.4m	6.5m	8m	-	12	10	-	-	-	12	-
F Majlis	36m ²	5m	6m	6m	30	10	10	7	10	-	-	-
G Pre-function	1000m ² ^	8.75m	-	-	700	-	-	-	-	-	-	-
H Royal Terrace	630m ² °	-	-	-	250	200	150	-	-	-	-	-
I Asateer	2400m ² §	3m*	60m	40m	2100	1200	1000	-	-	-	-	-

^ usable space, including corridors, ° depends on section, supplied upon request. § comprises Internet booth 30m², reception area 45m². * Minimum ceiling height – 9.2 max
NB: The capacities are based on empty rooms. Dimensions listed are strictly for guide purposes only.

Floor Plan

Conference Centre



- Floor Box
- Light Switch
- ★ Extra Power
- ▭ LCD Signage
- ▭ Movable Partition

The World's Leading Dining Destination

With over 34 restaurants, bars and lounges, Atlantis, The Palm is the ultimate destination for world-class dining, featuring celebrity chef restaurants, MICHELIN-starred venues, exquisite international buffets and a variety of exceptional dining experiences.

From intimate group lunches to exclusive restaurant takeovers, every venue can be tailored to host events that inspire connection and celebrate success.



The Region's Most Michelin-Awarded Dining Destination

FZN BY BJÖRN FRANTZÉN



European Fine Dining
with Japanese Influences

OSSIANO



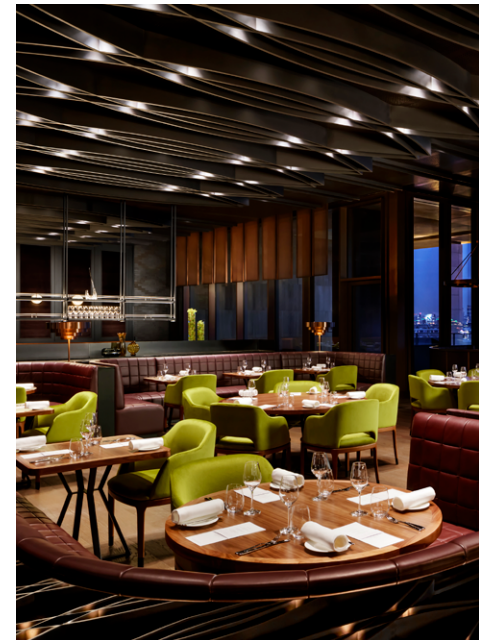
Progressive Fine Dining
Underwater Restaurant & Bar

HAKKASAN



Cantonese Restaurant & Bar

DINNER BY HESTON BLUMENTHAL



Located in Atlantis The Royal
Historic British Gastronomy

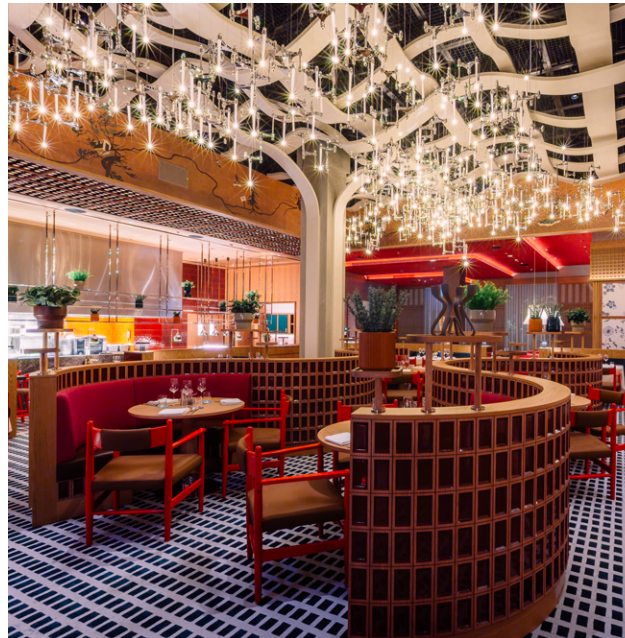
Social Dining

NOBU DUBAI



Japanese-Peruvian Restaurant,
Bar & Lounge

STUDIO FRANTZÉN



Social Dining & Bar

CASABLANCA BEACH CLUB



Mediterranean Restaurant,
Beach Club

Casual Dining

BREAD STREET KITCHEN & BAR



British Restaurant & Bar

SEAFIRE STEAKHOUSE & BAR



New York Steakhouse-style Restaurant & Bar

EN FUEGO



Mexican Restaurant & Bar

WAVEHOUSE



Bar – Bowling – Arcade – Soft Play

AYAMNA



Lebanese Restaurant

Buffet Restaurants

SAFFRON



KALEIDOSCOPE



Aquaventure World

Aquaventure World is where thrills, discovery and unforgettable memories come together. It is home to the world's largest waterpark, spanning 22.5 hectares with over 105 slides and attractions, the world's largest kids' zone, 2km of River Rapids and 1km of private beach. The all-new Lost World Aquarium showcases over 65,000 marine animals across 14 immersive chambers, with more than 6 hours of cinematic storytelling that bring myth and ocean life together. At Atlas Village, guests can enjoy interactive marine experiences with dolphins and seals, designed to inspire ocean conservation.

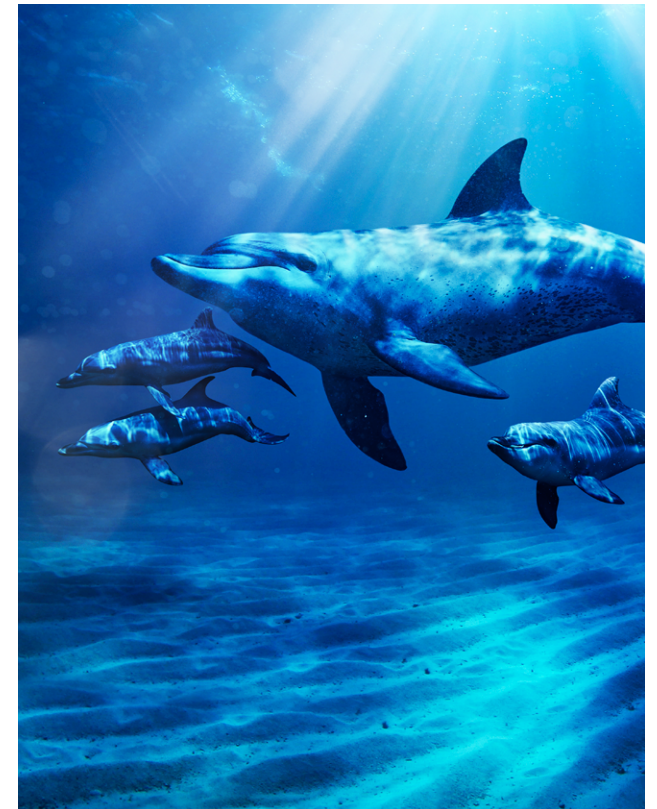
THE WORLD'S LARGEST WATERPARK



THE ALL-NEW LOST WORLD AQUARIUM



ATLAS VILLAGE



Resort Map



DINING, BARS & LOUNGES		LEISURE & ENTERTAINMENT		POOLS, BEACH & WATERSPORTS		SHOPPING		GUEST SERVICES		POINTS OF INTEREST	
2	Casablanca Beach Club	1	Asateer Tent	3	Casablanca Beach Club	4	Casablanca Boutique	16	Resort Activity Booking Point West Tower	🚇	Monorail Station
6	Beach Buns	5	Tennis Academy	10	Family Pool	9	Family Pool Kiosk	19	Atlantis Lost & Found	🛖	Towel Cabana
8	Saffron	7	Beach Club House	12	Imperial Club Beach	20	Marina Pharmacy West Tower	21	Medical Clinic (Lower Level)	🚻	Washrooms
17	The Edge	11	Little Pirates Playground	24	Palm Pool	25	Beach Boutiques	23	Royal Majlis - VIP Lounge	🚰	Buggy Stop
27	Nobu Dubai	13	Palm Grove	28	Palm Beach	39	Palm Pool Kiosk	29	Concierge Lounge	🚗	Aquaventure World and Casablanca Beach Club Parking
28	Plato's Lobby Lounge	14	Mini Golf	53	Watersports Beach	42	The Treasury	37	Resort Activity Booking Point East Tower		
30	Ayamna	15	AWAKEN Spa & Fitness			44	The Atlantis Boutique		Photo Counter		
31	Arabian Terrace	16	Nailology			45	Swedish Candy				
32	Imperial Club Lounge	22	Atlantis Explorers Club			47	The Avenues				
34	The Shore	43	Lost World Aquarium			48	Marina Pharmacy East Tower				
35	Ossiano	51	Aquaventure Ticketing Plaza								
36	Poseidon Café	52	Little Atlantis Playground								
38	Kaleidoscope										
40	Studio Frantzén										
41	FZN										
46	Bread Street Kitchen & Bar									🏧	Cash Withdrawal
46	Street Pizza									🕌	Prayer Rooms
46	Shawafel									🏥	Atlantis Helipad
46	Asia Republic										
46	Wavehouse										
46	DXBurger										
46	Seafire Steakhouse & Bar										
46	En Fuego										
49	Hakkasan										
50	Starbucks										

Note: This illustration of Atlantis, The Palm is not drawn to scale and bears no accuracy. It is for reference only. Information is subject to change without prior notice.



ATLANTIS
THE PALM, DUBAI

Media & Trade Tools

Discover media kits, press releases, and other useful resources curated especially for our travel partners.

[CLICK HERE](#)