



The Journey of Sound

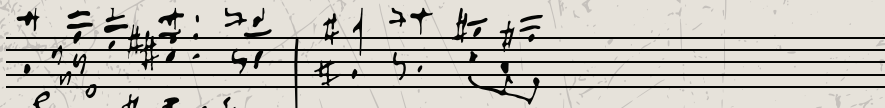
FOR THIS MENU, OUR BAR TEAM IMMERSSED THEMSELVES
IN THE RHYTHMS AND PATTERNS OF TRADITIONAL
JAPANESE INSTRUMENTS.

FROM DEEP, GROUNDING BEATS TO LIGHT, BREATH-LIKE
MELODIES, EVERY SOUND CARRIES A DISTINCT EMOTION.
THOSE SOUND WAVES BECAME OUR STARTING POINT.

SHARP NOTES TRANSLATED INTO BRIGHTNESS AND
ACIDITY. LOW FREQUENCIES BECAME DEPTH, UMAMI,
AND WARMTH. TEMPO SHAPED TEXTURE AND THE
QUIET BROUGHT BALANCE.

EACH COCKTAIL ON THIS MENU IS THE RESULT OF
THAT PROCESS.

A DRINK ON THE LEFT. AN INSTRUMENT ON THE RIGHT.
AND THE SKETCHES THAT SHAPED IT IN BETWEEN.



Handwritten musical notes and symbols, including a treble clef, a sharp sign, and various note heads and stems.

Handwritten musical notes and symbols, including a treble clef, a sharp sign, and various note heads and stems.

Handwritten signature and text. The signature appears to be "L. Delanté" and "L. Delanté" with "M. V." below it. There is also some illegible text below the signature.

Light, Melodic tones

BRIGHT, AIRY SIGNATURES SHAPED BY FLUTES AND
STRINGS WHERE LIGHTNESS OPENS THE FIRST NOTES OF
THE JOURNEY.

CROISSANT BELLINI

(G, D, E, SU)

The soft, plucked sounds of the Koto translate into delicate texture and buttery lightness.

TONE

BRIGHT · DELICATE · BUTTERY · SILKY

INGREDIENTS

KETEL ONE · PEACH RIESLING · CROISSANT ·
BLUE CHEESE · LEMONGRASS

AED 85

Beverages indicated with (A) - Alcohol, (C) - Celery, (D) - Dairy, (E) - Egg, (F) - Fish, (G) - Gluten, (L) - Lupin, (MU) - Mustard, (N) - Nuts, (R) - Raw, (S) - Shellfish, (SE) - Sesame, (SO) - Soybean, (SU) - Sulphites, (V) - Vegetarian

Please notify your server if you have any known food allergies or intolerances. Our beverages are prepared in an environment where other allergen ingredients are handled.

All prices are in UAE Dirhams and inclusive of 7% Municipality fees and 10% Service charge and 5% VAT.

INSTRUMENT

Koto

Butter Bellini + WOW contrast.

Options:

- Shortbread
- Mascarpone
- Vanille Kipferl
- Croissant (France)

~~ROQUEFORT~~

But too strong : (Lighter)

Prosecco substitute - Riesling? + Blue Cheese

CO²!!

	too complex Bellini
+	lemon grass
=	Perfect Balance

POLAR MOJITO

(G, N, SO, D)

The light, airy character of this bamboo flute shapes a cocktail that feels fresh and cooling.

TONE

FRESH · MINTY · COOLING · SOFT

SWEETNESS

INGREDIENTS

MICHTER'S BOURBON · LACTO-PASSION
FRUIT · AFTER EIGHT · FRANGELICO ·
POLAR MINT · FRANKLIN & SONS SODA

AED 90

Beverages indicated with (A) - Alcohol, (C) - Celery, (D) - Dairy, (E) - Egg, (F) - Fish, (G) - Gluten, (L) - Lupin, (MU) - Mustard, (N) - Nuts, (R) - Raw, (S) - Shellfish, (SE) - Sesame, (SO) - Soybean, (SU) - Sulphites, (V) - Vegetarian

Please notify your server if you have any known food allergies or intolerances. Our beverages are prepared in an environment where other allergen ingredients are handled.

All prices are in UAE Dirhams and inclusive of 7% Municipality fees and 10% Service charge and 5% VAT.

INSTRUMENT

Shinobue

+ CO2

Frangelico Mojito?

classic
cubes

BRAINSTORM - same glass?

Flavors *

mint² = xylitol soda

- after eight
- mint
- Bourbon? (crazy)
- fruit?

↓ Passion fruit
(people's favorite)

↓
Lacto fermented

BANANA-KETCHUP MICHELADA

(G, C, SO, D, E)

Inspired by the Sho's bamboo harmonies, this cocktail leans into savoury depth and umami weight.

TONE

SAVOURY · SWEET SOUR · UMAMI · BOLD

INGREDIENTS

ALTOS BLANCO · BANANA & BUTTER SAKE ·
BANANA KETCHUP · VANILLA ASAHI &
KOJI FOAM

AED 85

Beverages indicated with (A) - Alcohol, (C) - Celery, (D) - Dairy, (E) - Egg, (F) - Fish, (G) - Gluten, (L) - Lupin, (MU) - Mustard, (N) - Nuts, (R) - Raw, (S) - Shellfish, (SE) - Sesame, (SO) - Soybean, (SU) - Sulphites, (V) - Vegetarian

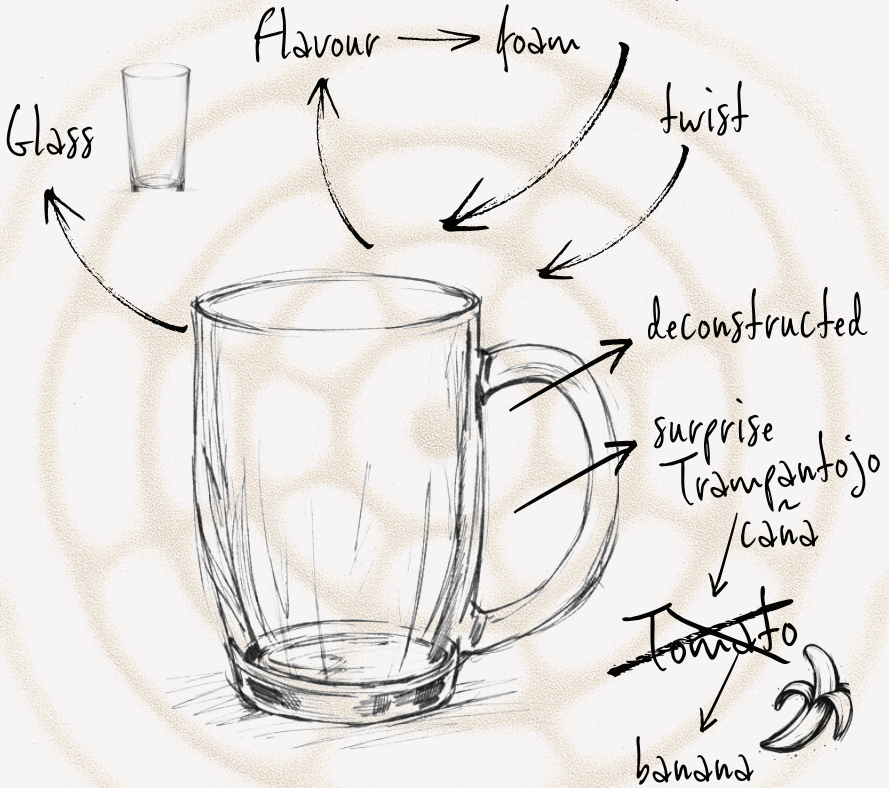
Please notify your server if you have any known food allergies or intolerances. Our beverages are prepared in an environment where other allergen ingredients are handled.

All prices are in UAE Dirhams and inclusive of 7% Municipality fees and 10% Service charge and 5% VAT.

INSTRUMENT

Shō

(koji
vanilla
beer)



Handwritten musical notation on a five-line staff, including a treble clef, a key signature of one sharp (F#), and a series of notes and rests.

Handwritten musical notes and symbols, including a treble clef, a key signature of one sharp (F#), and various note heads and stems.

Handwritten notes and symbols, including a treble clef, a key signature of one sharp (F#), and various note heads and stems, with a question mark.

Mid Range, Complex tones

LAYERED HARMONIES BUILT FROM RHYTHM AND
RESONANCE WHERE FRUITS, FLORALS AND TEXTURES
INTERTWINE.

MELON-OLIVE GIMLET

*The tension and rhythm of Shamisen's three strings
shape smooth layers that unfold slowly.*

TONE

TROPICAL · FLORAL · SMOOTH · LINGERING

INGREDIENTS

ST. GERMAIN · BACARDI CARTA BLANCA ·
MELON · OLIVE OIL · TONKA

AED 95

Beverages indicated with (A) - Alcohol, (C) - Celery, (D) - Dairy, (E) - Egg, (F) - Fish, (G) - Gluten, (L) - Lupin, (MU) - Mustard, (N) - Nuts, (R) - Raw, (S) - Shellfish, (SE) - Sesame, (SO) - Soybean, (SU) - Sulphites, (V) - Vegetarian

Please notify your server if you have any known food allergies or intolerances. Our beverages are prepared in an environment where other allergen ingredients are handled.

All prices are in UAE Dirhams and inclusive of 7% Municipality fees and 10% Service charge and 5% VAT.

INSTRUMENT

Shamisen

INGR.

- Elderflower
 - Melon
 - Olive oil
- TONKA
(vanilla)

METHOD:
SHAKEN!!!

GLASS

- Rocks glass
- Block ice



COLOUR

Light green

Garnish
- Melon candy
(kid memory)

PASS-ON FRUIT MARTINI

(G, SO, D)

*The Volcan's high-pitched tones inspired the
brightness and gentle warmth.*

STONE

ETHEREAL · TART · TOASTED · CREAMY

INGREDIENTS

THE BOTANIST · SAKE · PASSION FRUIT ·
MATCHA · TOASTED RICE ORGEAT ·
CHOCOLATE

AED 90

Beverages indicated with (A) - Alcohol, (C) - Celery, (D) - Dairy, (E) - Egg, (F) - Fish, (G) - Gluten, (L) - Lupin, (MU) - Mustard,
(N) - Nuts, (R) - Raw, (S) - Shellfish, (SE) - Sesame, (SO) - Soybean, (SU) - Sulphites, (V) - Vegetarian

Please notify your server if you have any known food allergies or intolerances. Our beverages are prepared in an environment
where other allergen ingredients are handled.

All prices are in UAE Dirhams and inclusive of 7% Municipality fees and 10% Service charge and 5% VAT.

INSTRUMENT

Nolean

Thai martini → R.I.P. How to elevate a passion fruit martini?

Japanese influence
no clarification
fruity but complex.
special glassware

↓
crowd pleaser

- trendy flavours
- ✓ - passion fruit
 - mango
 - ✓ - matcha
 - ✓ - caramel
 - strawberry
 - ✓ - chocolate
 - ginger
 - lychee
- watermelon
 - tacos
 - burger
 - sushi
- rice??

influencer starter pack

YUZU PIE

(G, SO, D)

The sharp pulse of this hand drum informs citrus clarity, balanced by soft, rounded richness.

TONE

CITRUS BRIGHT · CREAMY · AROMATIC ·
CLEAN FINISH

INGREDIENTS

HAKU · SAKE · GOLDEN FALERNUM ·
YUZU PIE · COCONUT · BLACK GARLIC

AED 90

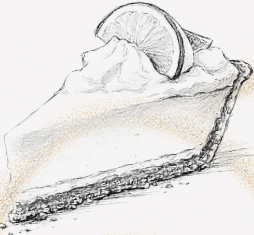
Beverages indicated with (A) - Alcohol, (C) - Celery, (D) - Dairy, (E) - Egg, (F) - Fish, (G) - Gluten, (L) - Lupin, (MU) - Mustard, (N) - Nuts, (R) - Raw, (S) - Shellfish, (SE) - Sesame, (SO) - Soybean, (SU) - Sulphites, (V) - Vegetarian

Please notify your server if you have any known food allergies or intolerances. Our beverages are prepared in an environment where other allergen ingredients are handled.

All prices are in UAE Dirhams and inclusive of 7% Municipality fees and 10% Service charge and 5% VAT.

INSTRUMENT

Tsuzumi



Carlota = Lemon Pie

↓
Limes

Mille Punch

+

★ coconut

+

= needs bitter notes

↓
Yuzu

↓
~~Sake~~

↓
Vodka ✓✓



Garnish =
Nobu chocolate.

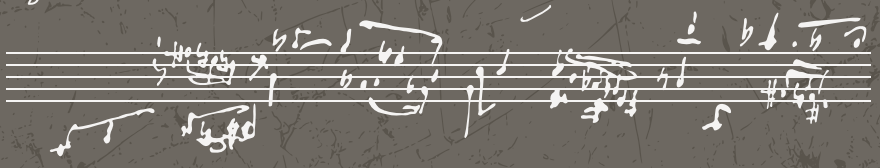
Good but simple
+ Black garlic
+ spices

Recommendation

SIP + BITE

NOT bite + sip

Should I ever see you again?
Should I ever see you again?



Heavy, Resonant tones

DEEP, POWERFUL SIGNATURES DRAWN FROM EARTHY
DRUMS AND WOODEN ECHOES WHERE FLAVOUR SETTLES
INTO ITS FULLEST FORM.

FLORA & FUNK FIZZ

(SU)

The Molekygo, or fish drum, has a steady wooden resonance that inspires the floral notes and depth.

STONE

STONE

FLORAL · FRUITY · FUNKY · REFRESHING

INGREDIENTS

DERRUMBES SALMIANA · PX SHERRY ·

CHAMOMILE · PEAR · GINGER ·

FRANKLIN & SONS SODA

AED 90

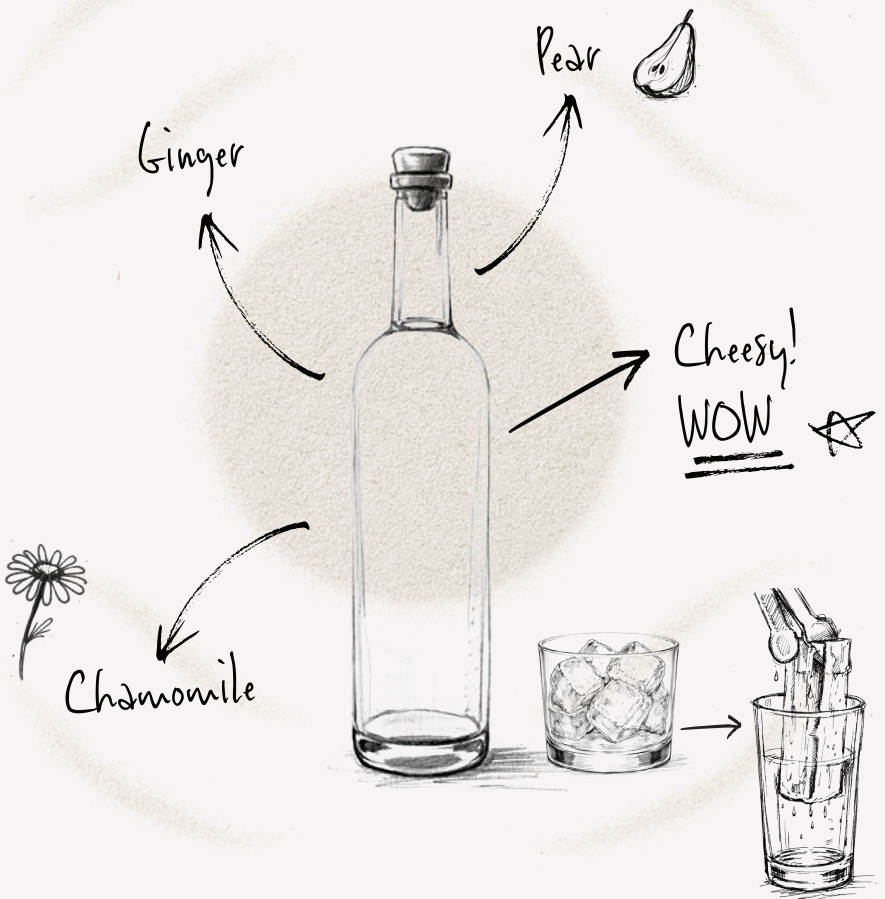
Beverages indicated with (A) - Alcohol, (C) - Celery, (D) - Dairy, (E) - Egg, (F) - Fish, (G) - Gluten, (L) - Lupin, (MU) - Mustard, (N) - Nuts, (R) - Raw, (S) - Shellfish, (SE) - Sesame, (SO) - Soybean, (SU) - Sulphites, (V) - Vegetarian

Please notify your server if you have any known food allergies or intolerances. Our beverages are prepared in an environment where other allergen ingredients are handled.

All prices are in UAE Dirhams and inclusive of 7% Municipality fees and 10% Service charge and 5% VAT.

INSTRUMENT

Mokugyo



KUMO SIDECAR

(G, F, SO, SE)

*The deep heat of the Taiko sets a bold direction,
softened through spice, fruit, and aroma.*

STONE

BOLD · NUTTY · AROMATIC · ROUNDED

INGREDIENTS

REMY MARTIN VSOP · COFFEE SAKE ·

SOURSOP FENNEL · TRUFFLE · SOBACHA &

TOFU FOAM

AED 95

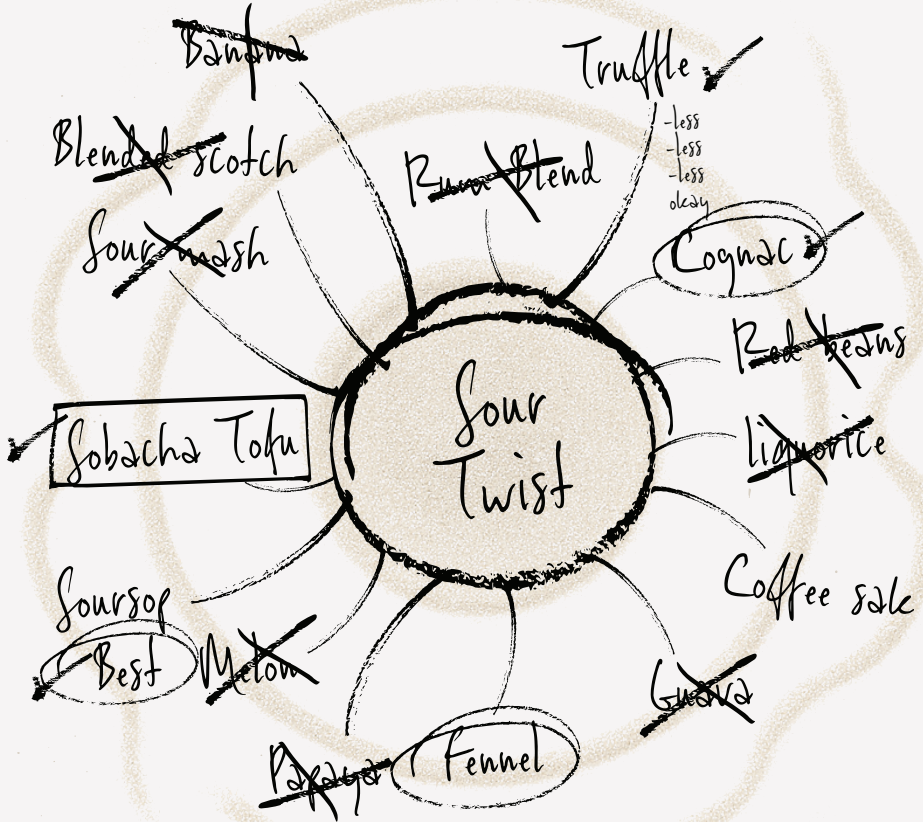
Beverages indicated with (A) - Alcohol, (C) - Celery, (D) - Dairy, (E) - Egg, (F) - Fish, (G) - Gluten, (L) - Lupin, (MU) - Mustard, (N) - Nuts, (R) - Raw, (S) - Shellfish, (SE) - Sesame, (SO) - Soybean, (SU) - Sulphites, (V) - Vegetarian

Please notify your server if you have any known food allergies or intolerances. Our beverages are prepared in an environment where other allergen ingredients are handled.

All prices are in UAE Dirhams and inclusive of 7% Municipality fees and 10% Service charge and 5% VAT.

INSTRUMENT

Taiko



NITRO RAMOS

(D, E)

*The slow, deliberate beat of this hand drum shapes
the rich, creamy layers of this cocktail.*

STONE

RICH · CREAMY · FRUITY · SILKY

INGREDIENTS

JACK DANIEL'S BONDED BLACK · UMESHU ·
KOKUTO · PLUM · CREAM · FRANKLIN & SONS
RHUBARB & HIBISCUS TONIC

AED 130

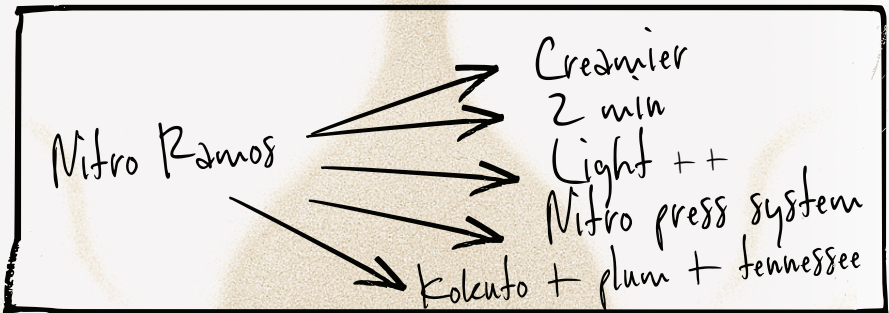
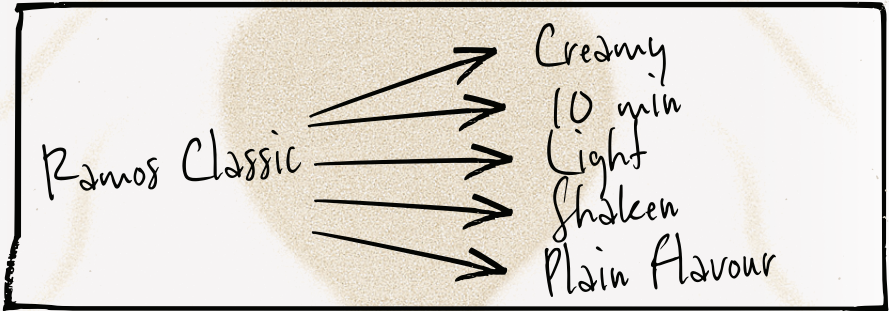
Beverages indicated with (A) - Alcohol, (C) - Celery, (D) - Dairy, (E) - Egg, (F) - Fish, (G) - Gluten, (L) - Lupin, (MU) - Mustard, (N) - Nuts, (R) - Raw, (S) - Shellfish, (SE) - Sesame, (SO) - Soybean, (SU) - Sulphites, (V) - Vegetarian

Please notify your server if you have any known food allergies or intolerances. Our beverages are prepared in an environment where other allergen ingredients are handled.

All prices are in UAE Dirhams and inclusive of 7% Municipality fees and 10% Service charge and 5% VAT.

INSTRUMENT

Ōtsuzumi



NO STRESS!!





JACK DANIEL'S
BONDED

The Bonded Exchange

THE BONDED EXCHANGE BRINGS TOGETHER
NOBU DUBAI AND HANDSHAKE SPEAKEASY,
THROUGH A SHARED RESPECT FOR CRAFTSMANSHIP
AND AUTHENTICITY.

HANDSHAKE IS ONE OF THE MOST CONSISTENTLY
ACCLAIMED BARS IN THE WORLD, RANKED IN THE TOP
THREE OF THE WORLD'S 50 BEST BARS FOR THREE
CONSECUTIVE YEARS, INCLUDING NO. 1 IN 2024
AND NO. 2 IN 2025.

THIS EXCLUSIVE COLLABORATION INTRODUCES FOUR
DISTINCT COCKTAILS, SHAPED THROUGH A BRIGHT
EXCHANGE OF IDEAS, TECHNIQUE, AND POINT OF VIEW.

WE HOPE YOU FIND THE SAME CARE IN THE GLASS
AS WE DID BEHIND THE BAR.

HANDSHAKE

Banana Cacao

(N, G)

INGREDIENTS:

JACK DANIEL'S BONDED RYE
DIPLOMATICO MANTUANO
COCOA BUTTER
BANANA
MOLE

AED 130

Piña Para La Niña

INGREDIENTS:

DIPLOMATICO MANTUANO
SAKE
COCONUT
PINEAPPLE
MAPLE
CHIPOTLE

AED 85

NOBU DUBAI

Lychee & Corn

INGREDIENTS:

JACK DANIEL'S BONDED BLACK
LYCHEE
CORN
COCONUT
ZAATAR

AED 110

Choco Forest

(SO, G)

INGREDIENTS:

JACK DANIEL'S BONDED BLACK
WAKAMOMO
HOJICHA
WAGYU
SHIITAKE
KOKUTO

AED 90

Beverages indicated with (A) - Alcohol, (C) - Celery, (D) - Dairy, (E) - Egg, (F) - Fish, (G) - Gluten, (L) - Lupin, (MU) - Mustard, (N) - Nuts, (R) - Raw, (S) - Shellfish, (SE) - Sesame, (SO) - Soybean, (SU) - Sulphites, (V) - Vegetarian

Please notify your server if you have any known food allergies or intolerances. Our beverages are prepared in an environment where other allergen ingredients are handled.

All prices are in UAE Dirhams and inclusive of 7% Municipality fees and 10% Service charge and 5% VAT.

HOKUSETSU SAKE

EXCLUSIVE TO NOBU

The Hokusetsu Brewery on Sado Island in the Sea of Japan has been operated by the Hazu family since 1871. The name Hokusetsu (Northern Snow) was chosen to reflect the ideal sake brewing conditions on the island during the coldest days of winter.

CHO-DAIGINJO YK35

Medium bodied, rare, luxurious, silky, and smooth

Small - 1000 Large - 2110 Bottle 500ml - 3985 1800ml - 9510

CHO-DAIGINJO YK35 SHIZUKU

JOKUSEI KOSHU

Medium bodied, highly complex, deep, and rich with nashi pear flavour

Small 2105 Large 4445 Bottle 720ml - 6845 1800ml - 20040

JUNMAI DAIGINJO

Medium bodied, clean, and complex with floral notes

500ml - 1680 1500ml - 2655

JUNMAI SHU SADO NO SAKE

Medium bodied with rich notes and creamy finish

Small - 180 Masu - 210 Large - 375 1800ml - 1680

HONJOZO YUKINO HIBIKI

Semi dry, dominant citrus with an overtone of pepper and spicy nut

Small - 190 Masu - 220 Large - 400 1800ml - 1790

HOKUTETSU JUNMAI DAIGINJO

KOSHITANREI HIKARI ENSHINBUNRI

Full bodied with elegant floral flavour of elderflower

Bottle 720ml - 9025

GINJO NIGORI

Unfiltered, dry, and creamy

Bottle 500ml - 770

HOKUSETSU SAKE

EXCLUSIVE TO NOBU

HOKUSETSU JUNMAI DAIGINJO 'YURA YURA'

A dry sake, fresh and light to both the palate and the nose, with hints of honeydew textures arising

Bottle 500ml - 1855

TK-40 JUNMAI DAIGINJO

Elegant floral flavors of orange blossom, elderflower, and white tea are found in its powerful structure

Small - 400

Masu - 465

Large - 840

Bottle 1.5L - 3150

ONGAKUSHU 10 YEARS OLD

Dry, smooth, and delicate, aged to the sound of soft soothing music

Small - 350

Masu - 405

Large - 735

Bottle 1.8L - 2745

ONIKOROSHI

Light bodied, crisp, and dry with a spicy finish

Small 165

Masu 195

Large 345

Bottle 1.8 L - 1555

SAKE "ROCK" 28%

Semi dry, intense yet smooth with notes of honeydew melon and fresh cut bamboo

Bottle 750ml - 1500

SOJU

	Glass	Bottle 500ml
Nobu 'The Soju' Fresh Cut	100	730

Beverages indicated with (A) - Alcohol, (C) - Celery, (D) - Dairy, (E) - Egg, (F) - Fish, (G) - Gluten, (L) - Lupin, (MU) - Mustard, (N) - Nuts, (R) - Raw, (S) - Shellfish, (SE) - Sesame, (SO) - Soybean, (SU) - Sulphites, (V) - Vegetarian

Please notify your server if you have any known food allergies or intolerances. Our beverages are prepared in an environment where other allergen ingredients are handled.

All prices are in UAE Dirhams and inclusive of 7% Municipality fees and 10% Service charge and 5% VAT.

WINES BY THE GLASS

CHAMPAGNE

	125ml	750ml
Veuve Clicquot Yellow Label Brut NV	190	1100
<i>(Pinot Noir, Pinot Meunier, Chardonnay) Reims, France</i>		

WHITE WINE

	150ml	750ml
Dr. Loosen L QBA 2022	80	350
<i>(Riesling), Mosel, Germany</i>		
Ruffino Lumina 2024	85	350
<i>(Pinot Grigio) Friuli-Venezia Giulia, Italy</i>		
Anselmo Mendes Contacto 2022	115	530
<i>(Alvarinho) Vinho Verde, Portugal</i>		
Cloudy Bay 2025	155	750
<i>(Sauvignon Blanc) Marlborough, New Zealand</i>		
Chablisienne La Pierrelee 2022	190	810
<i>(Chardonnay) Chablis, France</i>		

ROSÉ WINE

	150ml	750ml
Château D'Esclans Whispering Angel 2024	95	450
<i>(Grenache, Cinsault) Provence, France</i>		

RED WINE

	150ml	750ml
Famille Perrin Réserve Côtes du Rhône	95	400
<i>(Grenache, Syrah) Rhône Valley, France</i>		
Niepoort Rotulo Tinto 2020	115	480
<i>(Touriga Nacional, Jaen, Tinta Pinheira & Alfrocheiro) Dao, Portugal</i>		
Kaiken Ultra 2021	135	660
<i>(Malbec) Mendoza, Argentina</i>		
Joseph Drouhin Bourgogne Laforet 2024	180	770
<i>(Pinot Noir) Burgundy, France</i>		

DESSERT & FORTIFIED WINE

Donnafugata Kabir 2022	75ml 175	375ml 750
<i>(Muscat), Passito di Pantelleria, Italy</i>		
Ximénez-Spínola Muy Viejo Solera 1918	75ml 220	750ml 2000
<i>(Pedro-Ximénez) Xerez, Spain</i>		

SOMMELIER SELECTION BY THE GLASS

SPARKLING WINE	125ml	750ml
Chapel Down Brut Rosé NV <i>(Pinot Noir, Pinot Meunier, Chardonnay, Pinot Blanc) Kent, England</i>	320	1350
Jacquesson Cuvée 743 Extra Brut Dégorgement Tardif NV <i>(Chardonnay, Pinot Noir, Pinot Meunier) Dizy, France</i>	550	2800

WHITE WINE	150ml	750ml
Reboreda Morgadío A Telleira 2023 <i>(Godello) Ribeiro, Spain</i>	190	900
Cantina Terlano Quarz 2022 <i>(Sauvignon Blanc) Trentino-Alto Adige, Italy</i>	400	1700
Oxer Bastegieta Marko Terlegiz 2020 <i>(Hondarribi Zuri Zerratia, Hondarribi Zuri & Izkiriota Txikia) Basque Country, Spain</i>	460	2100
Dr. Bürklin-Wolf Ruppertsberg Gaisbohl GC 2022 <i>(Riesling) Pfalz, Germany</i>	690	3000
Pierre-Yves Collin-Morey Saint-Aubin Hommage À Margerite 1er Cru 2021 <i>(Chardonnay) Burgundy, France</i>	740	3200
Maison Leroy Bourgogne 2017 <i>(Chardonnay) Burgundy, France</i>	1150	5500

ROSÉ WINE	150ml	750ml
Dominique Portet Fontaine 2022 <i>(Syrah, Cabernet Sauvignon, Merlot) Yarra Valley, Australia</i>	105	450
Gérard Bertrand Clos du Temple 2022 <i>(Cinsault, Grenache, Syrah, Mourvèdre, Viognier) Languedoc-Cabrières, France</i>	830	3600

Beverages indicated with (A) - Alcohol, (C) - Celery, (D) - Dairy, (E) - Egg, (F) - Fish, (G) - Gluten, (L) - Lupin, (MU) - Mustard, (N) - Nuts, (R) - Raw, (S) - Shellfish, (SE) - Sesame, (SO) - Soybean, (SU) - Sulphites, (V) - Vegetarian

Please notify your server if you have any known food allergies or intolerances. Our beverages are prepared in an environment where other allergen ingredients are handled.

All prices are in UAE Dirhams and inclusive of 7% Municipality fees and 10% Service charge and 5% VAT.

SOMMELIER SELECTION BY THE GLASS

RED WINE	150ml	750ml
Comando G Rozas 1er Vino de Paraje 2021 <i>(Garnacha) Sierra de Gredos, Spain</i>	580	2500
Château Troplong-Mondot 2014 <i>(Merlot, Cabernet Sauvignon & Cabernet Franc) Saint-Émilion, France</i>	720	3100
Domaine Prieuré Roch Ladoix Le Cloud Rouge 2020 <i>(Pinot Noir) Burgundy, France</i>	980	4250
Tenuta San Guido Sassicaia 2019 <i>(Cabernet Sauvignon, Cabernet Franc) Bolgheri, Italy</i>	1400	5950
Sine Qua Non Distenta III 2021 <i>(Grenache) Ventura County, U.S.A</i>	1700	7300
Penfold's Grange 1996 <i>(Shiraz) Southern Australia, Australia</i>	4800	20700

DESSERT & FORTIFIED WINE	75ml	750ml
Dow's Vintage Port 2011 <i>(Touriga Nacional) Porto, Portugal</i>	350	3000
Château d'Yquem 2005 <i>(Sauvignon Blanc, Sémillon) Sauternes, France</i>	2350	20200

Beverages indicated with (A) - Alcohol, (C) - Celery, (D) - Dairy, (E) - Egg, (F) - Fish, (G) - Gluten, (L) - Lupin, (MU) - Mustard, (N) - Nuts, (R) - Raw, (S) - Shellfish, (SE) - Sesame, (SO) - Soybean, (SU) - Sulphites, (V) - Vegetarian

Please notify your server if you have any known food allergies or intolerances. Our beverages are prepared in an environment where other allergen ingredients are handled.

All prices are in UAE Dirhams and inclusive of 7% Municipality fees and 10% Service charge and 5% VAT.

NOBU DUBAI SIGNATURES

FLYING FISH 85

*Patrón Silver | Pepper | Clarified Lychee Cordial | Grapefruit
Sea Water | Soda*

BINCHO 85

*Altos Blanco | Casalotos | Roasted Pineapple | Pandan | Cacao
Citrus | Sea Water | Rocoto*

SENSAI (D) 80

*Tanqueray | Sake | Jasmine | Galliano | Peach | Raspberry
Chocolate Bitters*

AROMA (C, SE, SU) 80

*Tanqueray | Coconut | Celery Vermouth | Clarified Yuzu &
Basil Cordial | Sesame Oil*

JALAPEÑO & GINGER MARTINI 90

Ketel One | Jalapeño | Basil | Ginger | Citrus

TACO PUNCH (G, N) 90

*St. Barth Rhum | Italicus | Frangelico | Passionfruit | Lychee
Spices | Corn Tacos Tea*

RASPBERRY & WASABI SGROPPINO 85

Botanist | Coconut | Pastis | Prosecco | Raspberry | Wasabi

POPSTAR (F, G, S, SO) 85

*Patrón Silver | Sake | Tonka | Sobacha | Passion Fruit
Franklin & Sons Tonic Water | Kimchi*

MANDARIN BATANGA (MU) 90

*Altos Blanco | Lost Explorer Espadín | Aperol | Rhubarb
Mandarin Cola*

ZERO ABV COCKTAILS

SHISO DANCE (G, SO) 55
Pineapple | Red Shiso | Chili | Soy | Coriander

BARLEY POPS (G) 55
Barley | Pineapple | Tonic

STRAWBERRY & PLUM 55
Sour Plum Tea | Strawberry | Yuzu | Rhubarb & Hibiscus Tonic

NOBU LEMONADE 65
Yuzu | Citrus | Passion Fruit | Maple | Shiso | Soda

COCONUT APPLE 55
Green Apple | Coconut Water | Citrus | Vanilla | Thai Lime

SAMURAI JACK (N, SO) 60
*Genmaicha Tea | Jackfruit | Passion Fruit | Lychee | Citrus
Coconut Foam | Spices*

Beverages indicated with (A) - Alcohol, (C) - Celery, (D) - Dairy, (E) - Egg, (F) - Fish, (G) - Gluten, (L) - Lupin, (MU) - Mustard, (N) - Nuts, (R) - Raw, (S) - Shellfish, (SE) - Sesame, (SO) - Soybean, (SU) - Sulphites, (V) - Vegetarian

Please notify your server if you have any known food allergies or intolerances. Our beverages are prepared in an environment where other allergen ingredients are handled.

All prices are in UAE Dirhams and inclusive of 7% Municipality fees and 10% Service charge and 5% VAT.

NON - ALCOHOLIC

WATER

Acqua Panna 0.5 litre	29
Acqua Panna 0.75 litre	39
San Pellegrino 0.5 litre	29
San Pellegrino 0.75 litre	39

SOFT DRINKS

Pepsi	30
Pepsi Zero	30
Franklin & Sons Soda Water	35
Franklin & Sons Tonic Water	35
Franklin & Sons Ginger Ale	35
Franklin & Sons Ginger Beer	35
Franklin & Sons Lemonade	35

ENERGETIC DRINKS

Red Bull Energy Drink	40
Red Bull Sugar Free	40

JUICE

Grapefruit	30
Orange	30
Pineapple	30
Watermelon	30
Green Apple	30

BAR SNACKS

Our bar snacks are served exclusively at the bar.

Beef Tartare Shokupan (2pcs) <i>(E, D, G, SO, R, SE)</i>	95
Wagyu Beef Spicy Ponzu Taco (2pcs) <i>(G, SO, S)</i>	120
Salmon Spicy Miso Taco (2pcs) <i>(G, SO, S)</i>	80
Wagyu Slider (2pcs) <i>(E, D, G, MU, SE, SO)</i>	125
Black Cod Butter Lettuce (2pcs) <i>(F, G, SO)</i>	85
Wagyu Short Rib Jalapeño Salsa (2pcs) <i>(G, SE, SO)</i>	120
Crispy Squid Coriander Shiso Aioli <i>(E, G, MU, S, SO)</i>	85
Padron Pepper Yuzu Miso <i>(SE, SO, S)</i>	40
Crispy Rice Tuna <i>(E, D, G, SE, SO, S)</i>	120
Umami Chicken Wings (4pcs) <i>(SO)</i>	90

Beverages indicated with (A) - Alcohol, (C) - Celery, (D) - Dairy, (E) - Egg, (F) - Fish, (G) - Gluten, (L) - Lupin, (MU) - Mustard, (N) - Nuts, (R) - Raw, (S) - Shellfish, (SE) - Sesame, (SO) - Soybean, (SU) - Sulphites, (V) - Vegetarian

Please notify your server if you have any known food allergies or intolerances. Our beverages are prepared in an environment where other allergen ingredients are handled.

All prices are in UAE Dirhams and inclusive of 7% Municipality fees and 10% Service charge and 5% VAT.

